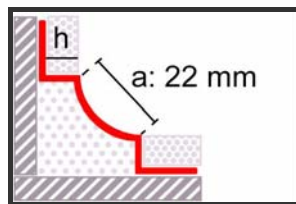


Novoescocia 5 PVC

h: 11 mm

Long: 250 cm

Material: PVC



NOVOESCOCIA 5

Profile as a half cane to facilitate the cleaning of tiled skirtings and angles. Special to fix the tiles **during the play**.

The Novoescocia profiles are specially designed to be placed in skirting-baseboard and tiled corners. They are usually used in sanitary, medical, feeding or industrial areas where exhaustive hygiene and cleanliness conditions are required.

As corners and skirting-baseboards are rounded, this avoids dirt and germ accumulation in difficult corners hard to clean.

All models can be placed horizontally and vertically.

Accessory pieces are also available for the Novoescocia profiles, with which a perfect finish off is achievable.

TECHNICAL SPECIFICATIONS of PVC

Polyvinyl chloride, or PVC, is a thermoplastic polymer widely used in many fields and sectors. Differentiate two types: Rigid and Flexible, which can be used together in a single product by the co-extrusion, as in the case of Novoescocia 3.

Material Properties

- Very good electrical resistance. (It has a low electrical conductivity.)
- Fire resistant coefficient is M1 according to NBE-CPI-96 classification, which means it's a combustible material but not flammable.
- Is ductile and tough.
- It has a great dimensional stability and minimal water absorption <0'1%
- Is recyclable by several methods.
- Working temperature: -5 to 40 ° C.
- Is not documented in the literature any case of PVC profiles that, properly used in an internal environment, is damaged or degrade over time. It could be argued that under such conditions, changing their appearance is practically negligible.

STANDARDIZED TEST

Resistance to chemical agents

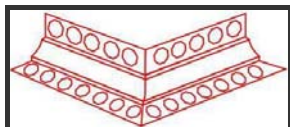
Our PVC profiles have been tested by the Technological Institute of Plastics, AIMPLAS, determining the resistance of PVC to various chemical agents.



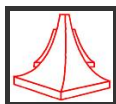
The results confirmed the strength of PVC to a large quantity of chemical agents. Nevertheless, its appearance or functionality may be affected negatively with chromic acid,

sulphuric acid, ammonium dioxide and organic solvents such as ethyl acetate, acetone or toluene.

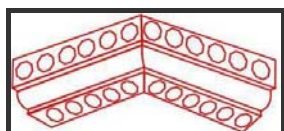
ACCESSORY PIECES



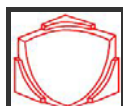
external angle 1



external angle 2



internal angle 1



internal angle 2

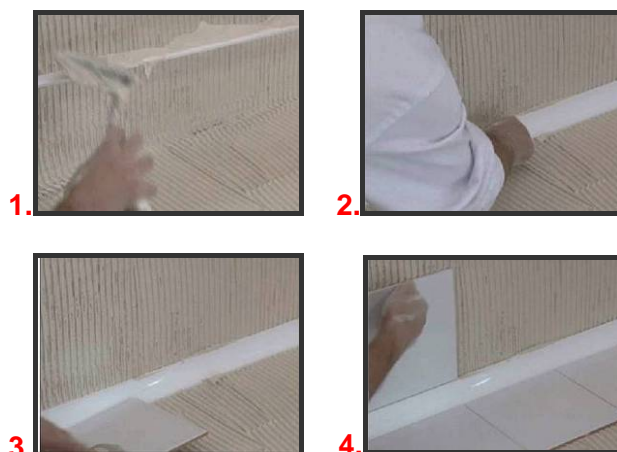
Novoescocia 5 profile has available accessory pieces, which you will achieve a perfect finished: the internal and external angle.

PLACEMENT

The Novoescocia 5 is designed to be place before the tiling. Fixation will be carried out with the same fixing material used for tiling.

- I. For its fixation, use abundant fixing material on the profiles' back surface.
- II. Then lean the profile lengthwise against the angle made by the floor and the wall, pressing to fixing material passes through the Octagon died on the wing fixing, for that purpose.
- III. After this, place the wall and floor tiles placing them against the profile, making sure that: the tiled wall, the Novoescocia profile and the floor are evened at the same level.

Example of placement of a Novoescocia model before the tiling.



To place the accessory pieces, first align these pieces perfectly with the Novoescocia profile's end. Place abundant fixing material on the back of the profile to ensure not only the correct support of the pieces but also a better fixation.

CLEANING

The great chemical resistance and inertia makes that PVC is not affected by most of the cleaning products that are on the market. The correct use of bleach does not affect the PVC.



In www.emac.es you can download for free the Technical Manual of Profiles, where you will find information about all our

profiles, its features, advices for cleaning and maintenance of the materials on which they are made, as well as, special applications and regulations and by-laws that affect our products. If you have some query or question, please contact with the technical office:

otecnica@emac.es